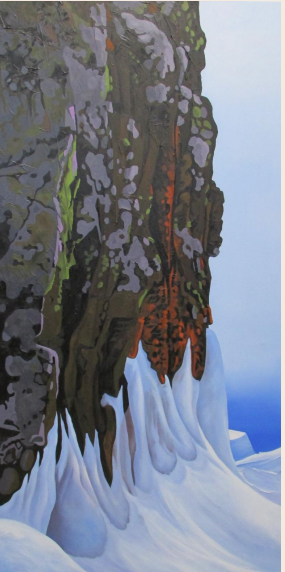




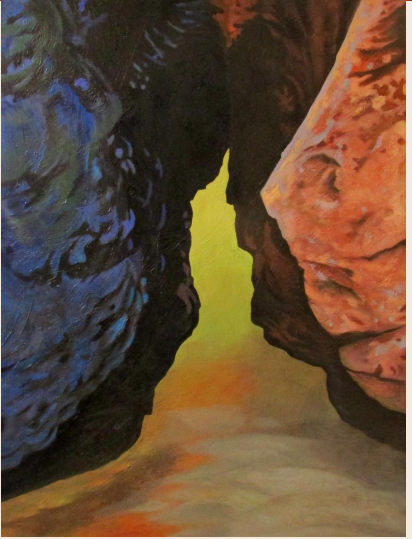
Agawa Coastal Trail XV
24" x 30" Acrylic 2019
\$2,300.00



Agawa Coastal Trail XVII
30" x 40" Oil 2018 \$3,800.00



Agawa Coastal Trail XVIII
24" x 48" Oil 2019
\$3,800.00



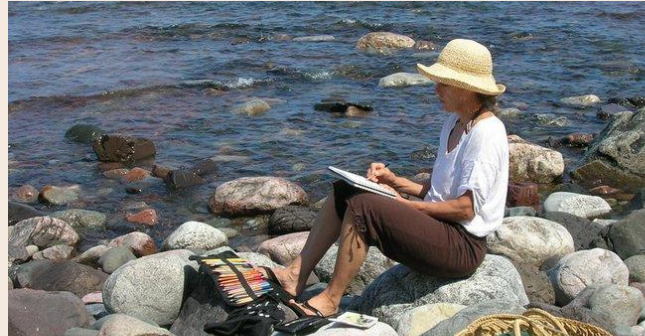
Agawa Coastal Trail XVI
30" x 40" Oil 2017
\$3,800.00



Agawa Coastal Trail XIX
24" x 24" Oil 2019
\$1,800.00

TAIMI POLDMAA

I am an oil painter of the landscape. My work is contemporary and representation with abstractions of colour, line and shape. Motivated by the geography of the land and its Precambrian history, I paint the coastal landscape of Lake Superior which captures the interest of everyone that visits its shores. I am intrigued by the colours and shapes of rock formations and how the shifting of seasons alters the hues of woodland, skies and water. My current work is inspired by the region of a Agawa Coastal trail within Lake Superior Provincial Park.

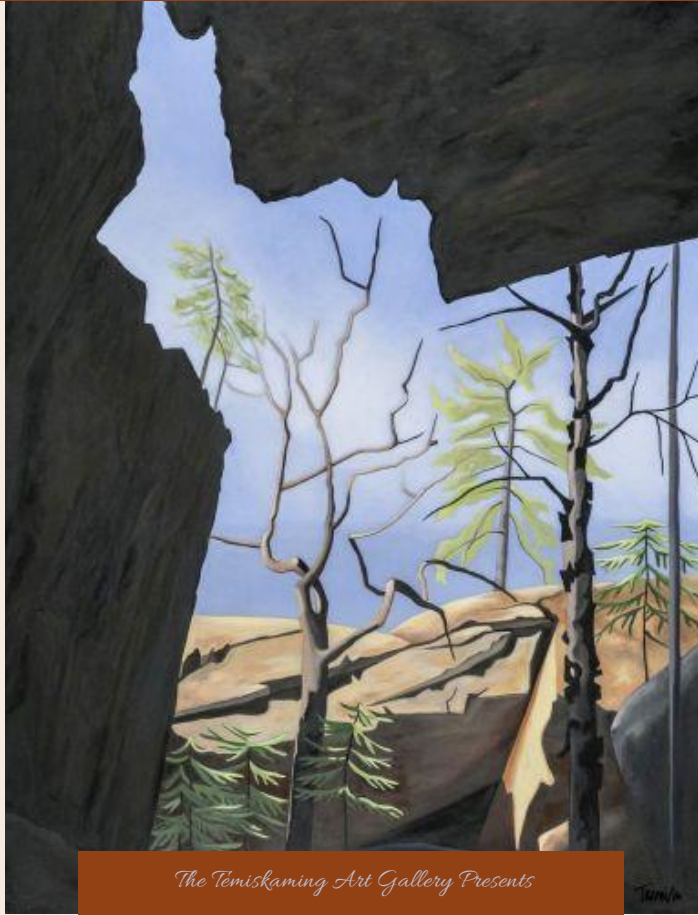


AGAWA COASTAL TRAIL

"Agawa Coastal Trail is a specific region within the Lake Superior Provincial Park where talus caves were formed when the Granite Cliffs broke apart thousands of years ago. It is a most enchanting sight and I was inspired to continue a new series of this area."

- Taimi Poldmaa

Agawa Coastal Trail is sponsored by:



The Temiskaming Art Gallery Presents

'FINDINGS' AGAWA COASTAL TRAIL

TAIMI POLDMAA

August 10 - September 18, 2020

The trail guides the explorer onward, zigzagging along the waters' edge to a serene pebble beach and then twisting back toward the dense foliage of ferns, moss-laden rocks and lush cedars, to a peaceful stream cascading down the banks to the lake below.

GALERIE d'ART du TEMISKAMING ART GALLERY TAG

Temiskaming Art Gallery
325 Farr Drive, Haileybury, ON
705 672-3706
info@temiskamingartgallery.ca
www.temiskamingartgallery.ca



Trail markers lead to a gap between several gigantic slabs of rock, beckoning entry into a crawl-space that must be scuttled through like a crab, and just as suddenly a steep incline of moss covered rocks leads upward and continues its meandering route to the main cave – an awe-inspiring experience.

Agawa Coastal Trail VIII
30" x 40" Oil 2017
\$3,800.00

Agawa Coastal Trail I
30" x 40" Oil 2018
\$3,800.00

Agawa Coastal Trail II
30" x 40" Oil 2017
\$3,800.00

Agawa Coastal Trail VI 30" x 40" Acrylic 2018 \$3,800.00



Agawa Coastal Trail IX
40" x 30"
Acrylic 2019 \$3800.00

Agawa Coastal Trail X
40" x 30"
Oil 2017 \$3,800.00



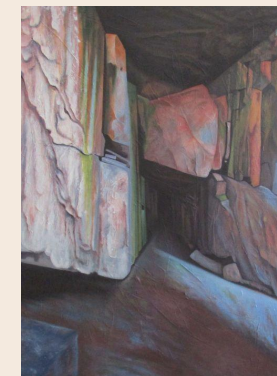
Agawa Coastal Trail III
30" x 40" Oil 2017
\$3,800.00

Agawa Coastal Trail IV
24" x 36" Oil 2017
\$2,800.00

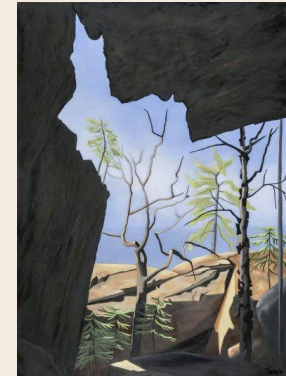


Agawa Coastal Trail V
30" x 40" Oil 2016
\$3,800.00

Agawa Coastal Trail VII
30" x 40" Oil 2018
\$3,800.00



Agawa Coastal Trail XI
30" x 40"
Oil 2017 \$3,800.00



Agawa Coastal Trail XII
30" x 40"
Oil 2018 \$3,800.00



Agawa Coastal Trail XIII
40" x 30"
Acrylic 2018 \$3,800.00



Agawa Coastal Trail XIV
36" x 24"
Oil 2017 \$2,800.00

The Agawa Coastal Trail, heading south toward Agawa River, is flanked on both sides by high granite cliffs draped heavily with mosses and lichen, the path below spongy with moss and dappled by sunlight. The air is close – leaves and grasses dripping with moistness, white birch and cedars absorbing and relishing the wet earth. The trail snakes around boulders crowned with ferns, rugged with twisting roots winding around and over slippery, moss-covered rocks. The trees stretch upward reaching for sunlight high above the cliffs.

The trail opens to a jagged coastline of granite angling steeply to the water's edge. The lake is unpredictable, the water deep and cold. Granite rocks and boulders speckled with bright orange lichen are scattered along the shoreline. Just to the north is the Agawa Rock and Indian Pictographs site.